



## WFCF Farm Friends Newsletter December 2024

### Read & Give to Our Annual Appeal

As we near to the end of 2024 we hope we can count on you, our community, as we plant seeds for the future! Please read our highlights from this year of growth in our Annual Appeal letter and consider donating any amount that your household may be able to contribute.

This year's expenses have been unlike any other in the past and we strive to support the land we steward, our community and team members in the most healthful ways.

We welcome gifts through DAF funds and family donations. Looking for donation assistance? Email Amanda Smith, Director of Development [amanda@communityfarms.org](mailto:amanda@communityfarms.org)  
Ready to share your gift now? [Link here to our annual appeal portal.](#)

We thank you!

### Annual Report to the City of Waltham

*Extra! Extra! Read all about it!*

Just before Thanksgiving, we turned in our first Annual Report to the City, highlighting our organization's many contributions to Waltham, the city we've proudly called home for 30 years. This report is required by our Annual License Agreement, which ends December

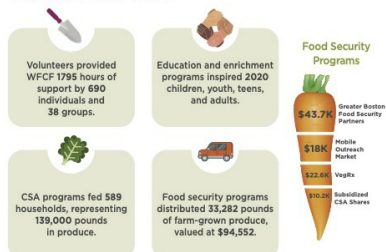


**Waltham Fields Community Farm cultivates sustainable and equitable relationships between people, their food supply, and the land from which it grows.**



*Thank you LexFarm and Boston Area Cleaners for providing us with season saving greenhouse space! Thank you.*

#### HIGHLIGHTS OF 2024



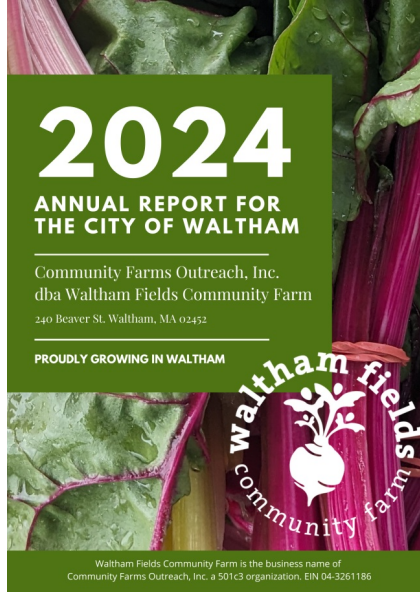
*"Last Saturday we had our first pickup for our CSA share. Of course, we were excited about getting so much delicious produce, but what struck me was the community I encountered. I took my children to the farm that day, and we ran into my daughter's kindergarten teacher from their Waltham elementary school, my son's swim instructor from the Waltham YMCA where he takes lessons, and a handful of other folks that I know from the neighborhood. It was a great way to spend time on the weekend connecting with others."*

— Waltham Resident

*WFCF grew 700 pounds of zucchini, bok choy, and kale for the Waltham School Nutrition program!*

31; we like you, we are hopeful of good news soon about its renewal.

[Read Our 2024 Report](#)



## Don't Miss Out on New Winter CSA Pilot Program

Shares are moving quickly! WFCF Winter Shares will consist of four Saturday pick ups of approximately 5 to 8 items per pick up. Each pick up will be comprised of approximately 50% fresh greens, and 50% root and storage crops. Fresh greens may include kale, lettuce, bok choy, collards, spinach, mixed winter greens, arugula. Root & storage crops may include beets, parsnips, rutabaga, carrots, watermelon radish, daikon radish, KN bravo radish, turnips, potatoes, winter squash, and onions.



### Pick Up Dates

Saturday, December 14 10am-1pm  
Saturday, January 11 10am-1pm  
Saturday, February 1 10am-1pm  
Saturday February 22 10am-1pm

[Sign Up Here](#)

## Please Fill Out Our 2024 CSA Survey

2024 CSA Shareholders: we want to hear from you!

Please take 3-5 minutes to take our end-of-season survey. Your feedback is important to us and helps us continuously improve our CSAs. Thank you!

[2024 CSA Survey](#)



**Farm Stand Closing Dec. 14; Pre-Order Now**



Your last chance to shop the farm stand will be Saturday, December 14 from 10am-1pm. Please come by for bulk vegetables and for discounted products!

Pre-order for many discounted Farm stand items has opened online; [view and order here](#).

As we prepare to wrap up our season, we would like to say thank you to our fantastic farm stand & CSA team: Victoria Heubner, Joy Grimes, Leanne Knight, Mary-Elise Connelly, Matt Bogart, Lizzy McEleney, and Yukiko Sato. We couldn't have done it without you!

## Thank You Nadine & Rabar



After five amazing years, Nadine Dyskant-Miller is moving on from as Assistant Farm Manager in order to pursue her dreams and to be closer to family. Nadine will be coming back in January to help Susannah Hilfer take over as Assistant Farm Manager. We cannot thank Nadine enough for pouring her heart and soul into the land and the community here at WFCF. Our Assistant Grower Rabar M'Salih is also moving on as our Assistant Grower to travel and to pursue his dreams. We have been so privileged to watch Rabar grow into his role as an amazing farmer, sterling tractor driver, and as newly minted American citizen this summer. We're going to miss them both dearly, so much so that we're going to just say, "So long," not farewell....

## Rabbit-Hosted Horchata & Hot Chocolate

Rabbit-Hosted Horchata & Hot Chocolate  
**THIS WEEKEND**

Saturday, December 14, 2024  
12:30 - 2:00 pm

Rabbit Hosted  
Horchata & Hot Chocolate  
Saturday, December 14  
12:30 - 2:30 p.m. \$25. per person



\$25 per person  
Family tickets in registration  
Join us in the Greenhouse  
for our last family workshop of the year!  
[Read More & Register](#)

**2025 program registrations will be opening soon!** Explore the winter farmscape with our education team through Little Sprouts, After School, and Teen Corps Winter Workshops.  
[Watch our Website](#)

## Reflecting on This Year's Food Access Programs



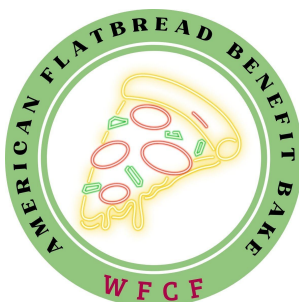
“This season, I learned that not only was my job to increase community members' access to local, organically grown produce, it was also to fill the space with the building blocks to foster community with one another and with us at the Farm. Food is supposed to be a social experience: sharing recipes and meals with one another, trying new foods together, and sitting around the table to break bread. The basis of community is trust, and especially for those from low income and historically marginalized communities, trust is not a given, it's something you earn.”

It's been so incredible getting to know the Waltham community this year through our Food Access programs: Veg Rx and the Mobile Outreach Market. In partnership with 15 different community organizations, all supporting low-income residents of Waltham in a variety of ways, we were able to share a total of **13,145**

pounds of fresh, locally grown produce with 703 families across these two programs. I'm delighted to have played a part in fostering the community between low-income residents of Waltham and the Farm, and supporting a space open and comfortable enough for community among program participants to flourish. It was a great season of earning and building the trust of the community that I'm working in; I think we've built a solid foundation for seasons to come.--*Marina Vergara, Community Outreach Farmer*

Click [here](#) to read Marina's full update at this year's Annual Meeting.

## Rising High at American Flatbread



Thank you for making our **American Flatbread Somerville Benefit Bake** a success! Together we raised **\$476** for WFCF's education and food access programs! It was wonderful to see so many members of our community, staff and board gathered together on Giving Tuesday to support the farm this way. Special thanks to owner Jim Harrison for sharing his passion for organic local food with us!

**Community Events**



[Holiday Wagon Rides](#)

Gore Place  
December 14  
10-Noon



[A Christmas Carol](#)

Charles River  
Museum of Industry  
December 12 7pm



[Mount Auburn Solstice](#)

Mount Auburn Cemetery  
Cambridge, MA  
Dec 10-11, Dec 13-15, Dec  
17-18, Dec 20-21



local food for everyone

**Waltham Fields Community Farm**  
240 Beaver Street, Waltham, MA 02452  
(781) 899-2403  
[www.communityfarms.org](http://www.communityfarms.org)  
Mailing address  
P.O. Box 540370 Waltham, MA 02454

Andy Andrews, Farm Manager  
Stacey Daley, Executive Director  
Nadine Dyskant Miller, Assistant Farm Manager  
Jessica Herwick, Director of Education &  
Community Engagement  
Susanna Hilfer, Assistant Grower  
Marla Rhodes, Volunteer Coordinator  
Amanda Smith, Development Director  
Ana Strayton, Distribution & CSA Manager  
Trish Wesley Umbrell, Associate Director  
Marina Vergara, Community Outreach Farmer & Lead Educator

Winter CSA Assistant Growers Robbie Harwood and Nina Waskiewciz

**Connect with WFCF!**



Waltham Fields Community Farm | 240 Beaver Street | Waltham, MA 02452 US

[Unsubscribe](#) | [Update Profile](#) | [Constant Contact Data Notice](#)



Try email marketing for free today!